



Established over 50 years ago, Blagdon are committed to producing a comprehensive range of high quality, easy to use, pond equipment. An ongoing programme of research and development ensures excellent performance and value for all their customers. This product excellence is demonstrated by Blagdon's award winning range of water gardening equipment. As a result Blagdon's reputation for quality is unrivalled amongst experienced pond gardeners and retailers alike.

Interpet, Vincent Lane,  
Dorking, Surrey, RH4 3YX

Leaflet Code: 14/11/12



# pond and garden LED light set 3/5 way sets



# pond and garden LED light set 3/5 way sets

Congratulations on buying a Blagdon  
Pond and Garden LED Light set.

This product has been designed to  
create beautiful lighting effects.

Quick and easy to install with a wide range  
of versatile installation options.

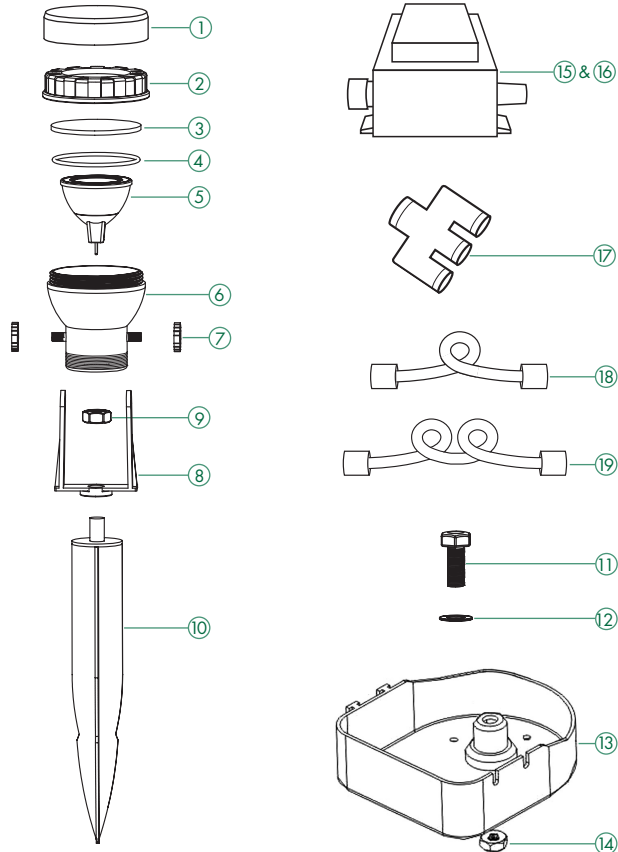
## IMPORTANT

Please attach proof of purchase to this manual  
and file in a safe place.

## 1. CONTENTS

Getting to know your Pond and Garden LED Light set .....	2
Spare parts .....	2-3
Technical Specification .....	3
<b>Installation</b> .....	<b>4</b>
Electrical installation .....	4
Location .....	5
Adjusting the spotlights .....	6-7
<b>Maintenance</b> .....	<b>8</b>
<b>Faults - Problems Procedure</b> .....	<b>9</b>
Consumer Advice Contact Details .....	9
<b>Guarantee</b> .....	<b>9</b>

## GETTING TO KNOW YOUR POND AND GARDEN LED LIGHT SET



## GETTING TO KNOW YOUR POND AND GARDEN LED LIGHT SET

No.	LED Light Set - Parts Description	Spare Code
1.	Coloured lenses set of 3	1052160
2.	Lamp cover	N/A
3.	Glass lens	N/A
4.	Lens 'O' ring	1021319
5.	LED Lamp 3w	1052290
6.	Lamp housing	N/A
7.	Oval locking washer	N/A
8.	'U' Bracket	1021357
9.	Garden spike locking nut	N/A
10.	Garden spike	N/A
11.	9mm bolt	N/A
12.	Metal washer	N/A
13.	Pond light support base	N/A
14.	Metal fixing nut	1021364
15.	3 Way Transformer	1052184
16.	5 Way Transformer	1052252
17.	3 way connector	1021432
18.	4m Extension cable	N/A
19.	7.5m Extension cable (sold separately)	1052191

### Technical Specification

LED Lighting Sets	3 Way Set	5 Way Set
Cable Mains	3m	3m
Cable Low Voltage	10m	18m
Transformer Voltage	230V	230V
Transformer Hertz	50 Hz	50 Hz
Low voltage	12V	12V
Lamp Wattage	3x3w	5x3w
Total Wattage Usage	9W	15W

# INSTALLATION

## Electrical installation



The power supply must meet the specifications on the product.

The transformer is intended to be used with either a weatherproof switchbox cable connector or permanently connected to the fixed wiring in the main system other than by means of a plug and socket.

The cores in the supply cable are coloured in accordance with the following code:

**Brown = Live, Blue = Neutral,**

The electric cable is permanently connected and sealed in the transformer body. If the supply cable is damaged the transformer must not be used.

Do not use the supply cable to lift the transformer as this may cause damage.



## WARNING

A Residual Current Device (RCD), also known as the Residual Current Circuit Breaker (RCCB), with a tripping current not exceeding 30mA must be installed in the supply circuit.

A means of disconnection from the supply having a contact separation of at least 3mm in all poles must be incorporated in the fixed wiring.

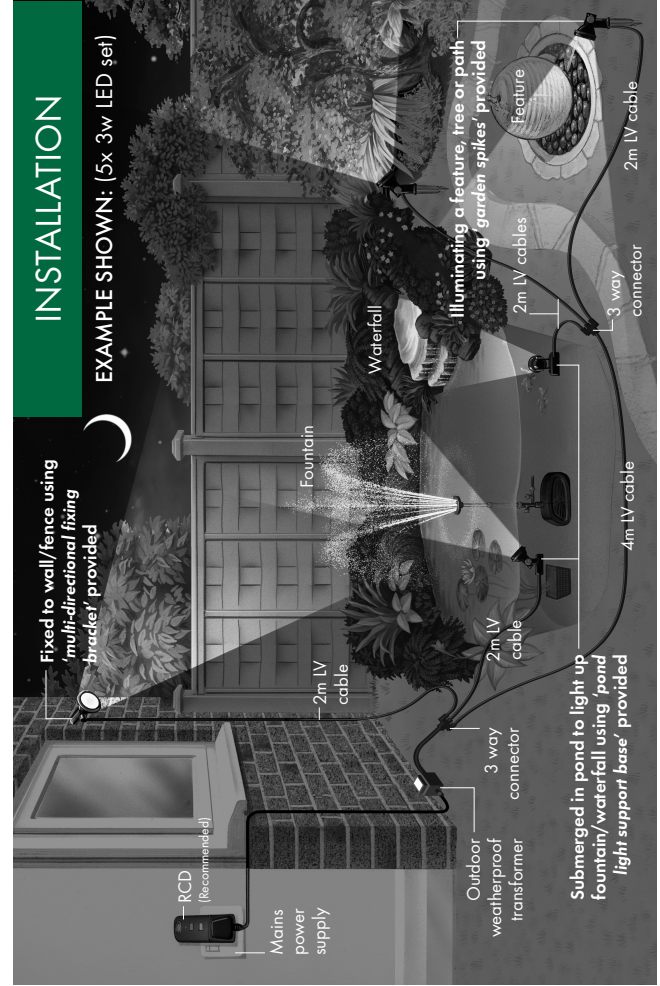
For permanent installations to the mains supply, it is necessary to conform to the regulations of the local electricity authority and this would include the use of a metal or plastic conduit to protect the cable.

Attention has been drawn to the fact that special rules may exist concerning the installation of your transformer (i.e. local building regulations).

Always disconnect the mains electricity supply whilst the equipment is being installed, repaired, maintained or handled. Consult a qualified electrician if in any doubt about wiring this product to the main supply.



**Warning** - This transformer must not be used in ponds.  
For external installation only.



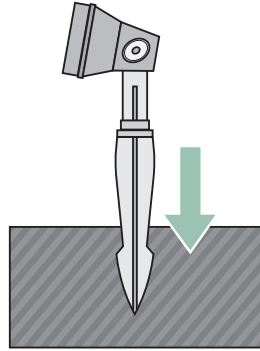
## INSTALLATION

EXAMPLE SHOWN: (5x 3w LED set)

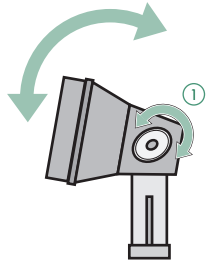
## INSTALLATION

### GARDEN SPIKE:

Insert the garden spike into soil or gravel for external installation.



### SPOTLIGHT ADJUSTMENT:



1. Release the oval locking washer and tighten when in position.

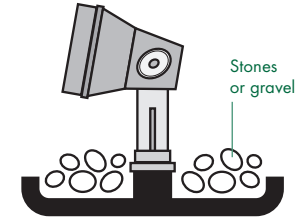
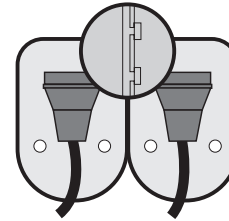


2. Release the fixing nut and tighten when in position.

## INSTALLATION

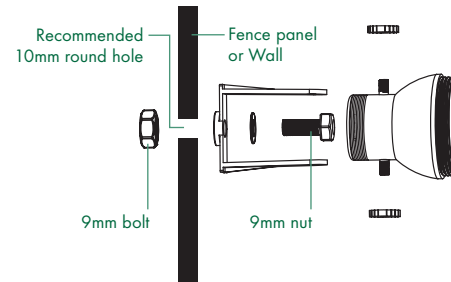
### POND LIGHT BASE:

The light bases can be linked and weighted with stones or gravel for stability.



### LED 'U' BRACKET:

The LED 'U' bracket can be directly attached to a fence or wall using the 9mm round bolt and nut supplied.

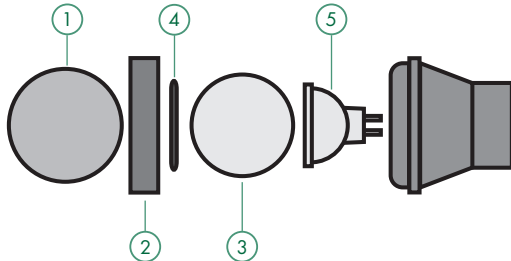


## MAINTENANCE

Before any operation, turn off the spotlight and disconnect the mains from the power socket. The spotlight can now be removed from the pond. If you have used the coloured lens (1), you must remove it, after which you can unscrew the lamp cover (2) to remove the transparent glass (3) and associated O ring (4).

When the spotlight has been dismantled in this way, the LED lamp (5) can be removed and replaced.

Reassemble in the reverse order.



## IMPORTANT FAULTS - PROBLEMS PROCEDURE

Before returning your Blagdon Pond and Garden LED Light Set to your dealer or contacting our Consumer Advice Department, please carry out the following steps. This will solve most problems quickly and easily.

1. Ensure electrical procedure has been followed fully.  
Check fuse and any cable connectors/switch boxes.
2. Return light to point of purchase for inspection and advice  
(you may need proof of purchase).



You can help protect the environment. Please remember to respect the local regulations: hand in non-working electrical equipment to an appropriate waste disposal centre.

### Consumer Advice contact details

Interpet (Blagdon) Consumer Advice Department  
Vincent Lane, Dorking, Surrey RH4 3YX

Fax: 01306 876712 E-mail: [customercare@interpet.co.uk](mailto:customercare@interpet.co.uk)

## GUARANTEE

This guarantee is offered as an extra benefit and does not affect your statutory rights as a consumer in any way. This product is guaranteed against defects in material and workmanship for 3 years from the date of purchase, under normal usage. **The guarantee DOES NOT APPLY in case of improper use**, negligence, lack of maintenance or accidental damage either to the lights, transformer or to the replaceable parts. If the lights or transformer fail due to a manufacturing fault within this period it will be either repaired or replaced free of charge. Liability is limited to replacement of the faulty product only, no other costs will be reimbursed. This guarantee is not transferable and does not affect your statutory rights. This guarantee does not confer any rights other than those expressly set out above. Excludes lamps, O rings, coloured lenses or washers.