



OF
OCEAN FREE

Hydra FILTRON

1000 | 1500 | 1800

INSTRUCTION MANUAL



English Version 1.0.0

Ref: HF059

TECHNICAL SPECIFICATIONS

MODEL	HYDRA FILTRON 1000	HYDRA FILTRON 1500	HYDRA FILTRON 1800
For Aquarium Size Up To	80 - 300 L 20 - 80 US Gal	150 - 600 L 40 - 160 US Gal	200 - 800 L 50 - 210 US Gal
Product Size	240 x 240 x 363 mm 9.5" x 9.5" x 14.3"	272 x 272 x 403 mm 10.7" x 10.7" x 15.9"	300 x 300 x 443 mm 11.8" x 11.8" x 17.5"
Pump Flow Rate	1000 L/H 270 US Gal	1500 L/H 400 US Gal	1800 L/H 480 US Gal
Circulation Flow Rate	600 L/H 160 US Gal/H	900 L/H 240 US Gal/H	1100 L/H 290 US Gal/H
Filter Media Baskets Volume	4.7 L 1.3 US Gal	7.0 L 1.9 US Gal	10.0 L 2.7 US Gal
Filter Media Baskets	3 pcs	3 pcs	4 pcs
Power Consumption	13 W	23 W	32 W
Inlet & Outlet Hose	ø 16 / 22 mm inner ø 5/8"	ø 19 / 25 mm inner ø 3/4"	ø 19 / 25 mm inner ø 3/4"
Cable Length	2.0 m 78.0"	2.0 m 78.0"	2.0 m 78.0"
Max Height	1.4 m 55.0"	2.0 m 78.0"	2.4 m 94.5"
Cata-pure Cartridge(s)	2 pcs	3 pcs	4 pcs

WARRANTY

OF® Hydra Filtron has a guarantee of 3 years from the date of the purchase. The 3 year guarantee only covers defects in the Pump Head Motor. There is a 1 year guarantee against all defects for workmanship and quality. In the event of a claim under the guarantee, please contact your specialist pet shop with proof of purchase.

Guarantee excludes and does not cover any damages, loss, malfunction, defect or other issues arising from:

- Inappropriate or improper installation, set-up or use, as stipulated in the User's Manual,
- Parts subject to wear and tear (such as sealing rings, the impeller and shaft),
- Damage to the motor resulting from misuse, negligence or tampering,
- Transportation or shipping,
- Repair/modification by unauthorized person.
- Natural or man-made disasters.

We reserve the right to replace or repair the defective parts under guarantee at our discretion. The guarantee is limited to repair or replacement, at Yi Hu Fish Farm and their distributor's discretion, and where permitted by law does not include indirect, special, punitive, consequential or incidental damages caused by this appliance. Warranty conditions are subjected to different country requirements.



WARNING

READ AND FOLLOW ALL safety instructions to avoid hazardous situations which could result in death or serious injury.

IMPORTANT SAFETY INSTRUCTIONS

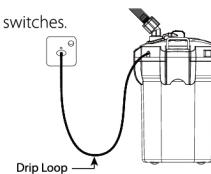
Thank you for purchasing OF® Hydra Filtron. Please read instruction manual thoroughly before installation and operation of this appliance. Do not attempt repairs yourself or try to modify the appliance. Failure to do so may result in damage to this product. Should you have any questions regarding after service care, please contact your local dealer.

1. General Safety

- Do NOT use the appliance for any purpose other than that for which it is intended.
- Ensure close supervision when appliance is used in areas easily accessible by young children. This appliance is not intended for use by young children without supervision by adults.
- Do NOT use the appliance with inflammable, chemicals or acidic liquids.
- Do NOT use the appliance in water above 50°C.
- Do NOT use the appliance near flammable gas (i.e. gasoline).
- Do NOT operate the filter without water, or it will cause permanent damage.
- Ensure hoses are correctly connected before use. Observe the appliance after installation to ensure it is functioning properly.
- Do NOT over pack the filter baskets. The flow will reduce if the filter media are too tightly packed.
- Be aware that young/small fishes might be sucked in by the filter.
- Do NOT use the filter in freezing conditions to avoid damage.

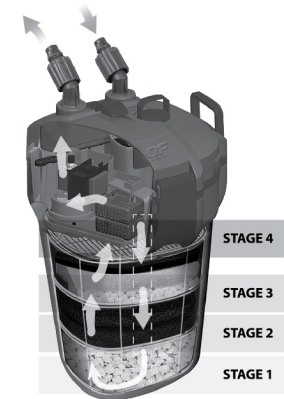
2. Electrical Safety

- **DANGER** - Do NOT touch electrical components and plugs with wet hand.
- **DANGER** - Do NOT use the appliance if plug and socket is wet.
- **CAUTION** - Do NOT attempt to retrieve appliance if it drops into the water. Unplug the appliance before taking it out from water.
- Use only the correct power and frequency as shown on the products. In the event of any water leakage or malfunction, turn off the power supply.
- Do NOT install aquarium tanks and filters near any home electrical appliances (i.e. computers and TV).
- Do NOT bind or tie up the cables when using.
- Do NOT modify the power cables. Do NOT reequip the switches.
- To prevent the appliance plug or socket from getting wet, use a Drip Loop such that should any leakage occur, water will not drip onto the plug or socket.



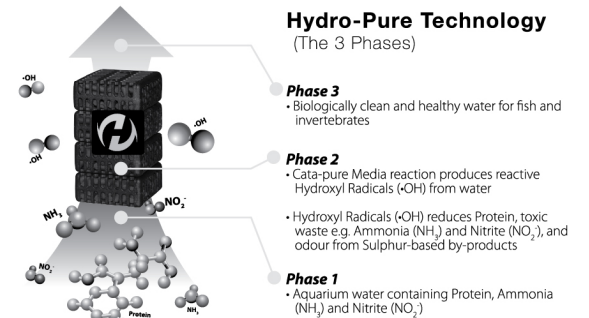
NOTABLE FEATURES

- **4-Stage Water Purification** | Hydra Filtron's 4-Stage Water Purification, goes beyond the conventional 3 stage filtration (Mechanical, Biological, Chemical), with the incorporation of the revolutionary Hydro-Pure Technology that uses Hydroxyl Radicals (-OH) to accelerate the startup time from the usual 4-5 weeks to within 1 week, reduces water odour, and retains a crystal clear tank. The result is a cleaner and healthier aquarium the natural way without any harmful chemical.



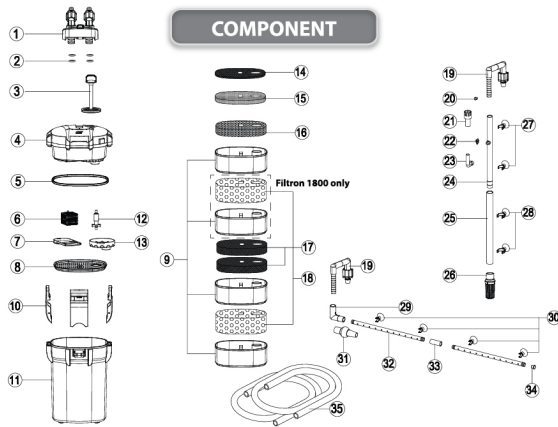
STAGE	DESCRIPTION	FUNCTIONS
STAGE 1	3DM Nuggets	<ul style="list-style-type: none"> • Breaks down large solids and traps suspended particles • Provides a high surface area for beneficial bacteria which helps break-down toxic waste (e.g. Ammonia and Nitrites) biologically
	BioTrap Sponge	<ul style="list-style-type: none"> • Breaks down finer solids and traps suspended particles • Provides surface area for beneficial bacteria for further biological purification of toxic waste
STAGE 3	3DM Beads	<ul style="list-style-type: none"> • Provides highest surface area for beneficial bacteria which helps break-down toxic waste biologically
	Fine Filter Wool	<ul style="list-style-type: none"> • Removes fine particles
STAGE 4	Carbon Pad	<ul style="list-style-type: none"> • Adsorbs dissolved organic compound and heavy metals to maximize efficiency of the Hydro-Pure Technology
	Hydro-Pure Technology	<ul style="list-style-type: none"> • Prevents New Tank Syndrome which is the main cause of fish death in new tanks by constantly breaking down protein, and detoxifying Ammonia (NH₃) and Nitrite (NO₂) • Reduces water change. • Produces crystal-clear water. • Reduces water odours by the oxidation of Sulphur-based elements which causes smell in the water.

Hydro-Pure Technology (The 3 Phases)



- **One Pull Priming** | A quick pull and push of the Primer draws water into the canister making it ready to use
- **Valve for Easy Maintenance** | Valve controls at the inlet and outlet pipes eliminate the hassle of dealing with water spills during maintenance
- **Surface Skimmer** | Removes unsightly surface oil film to improve oxygen exchange and increase light penetration at water surface





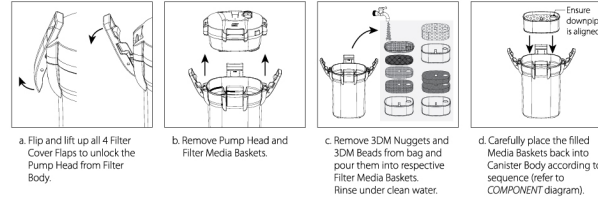
INSTALLATION

Important notes

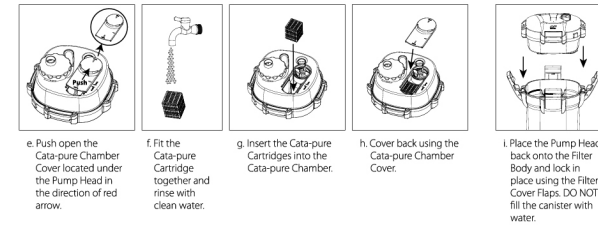
- Cutting tools needed to cut hose during installation.
- This appliance must be installed below the aquarium.
- Check that all components are included when unpacking.



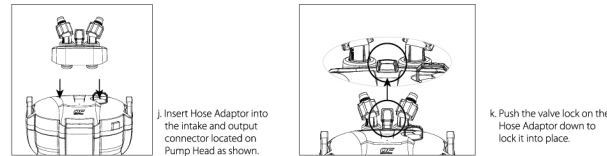
Step 1 - Preparing the Canister Preparing the Filter Media



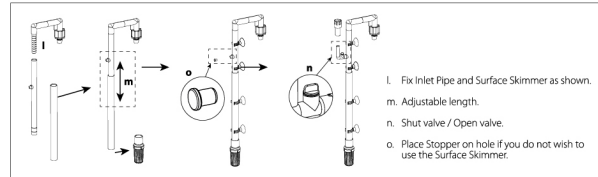
Installing the Cata-pure Cartridges



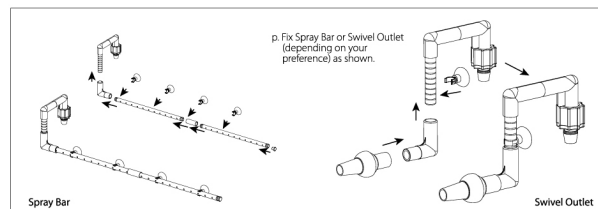
Step 2 - Piping Installation Installing Hose Adaptor



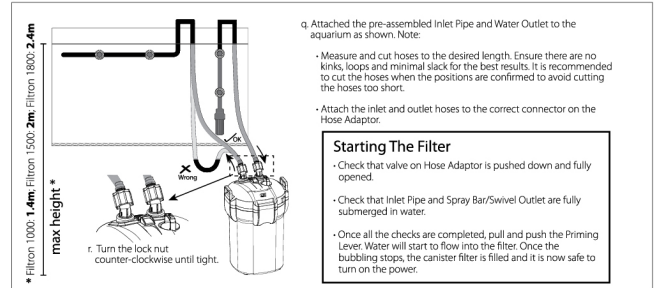
Preparing Inlet Pipe



Preparing Water Outlet



Step 3 - Installation & Starting The Filter



- q. Attached the pre-assembled Inlet Pipe and Water Outlet to the aquarium as shown. Note:
- Measure and cut hoses to the desired length. Ensure there are no kinks, loops and minimal slack for the best results. It is recommended to cut the hoses when the positions are confirmed to avoid cutting the hoses too short.

- Attach the inlet and outlet hoses to the correct connector on the Hose Adaptor.

Starting The Filter

- Check that valve on Hose Adaptor is pushed down and fully opened.
- Check that Inlet Pipe and Spray Bar/Swivel Outlet are fully submerged in water.
- Once all the checks are completed, pull and push the Priming Lever. Water will start to flow into the filter. Once the bubbling stops, the canister filter is filled and it is now safe to turn on the power.

MAINTENANCE FREQUENCY

DO maintain and clean the filter parts regularly to ensure appliance operates at maximum efficiency.

COMPONENT	MONTHLY	3 MONTHS	6 MONTHS	ANNUALLY
Impeller	Clean			Replace ¹
Impeller Shaft	Clean			Replace ²
Silicon O-Ring	Clean	Clean, check for damage & lubricate		Replace
Fine Filter Wool	Replace			
Carbon Pad	Replace			
BioTrap Sponge		Clean ¹	Replace ²	
Cata-pure Cartridges	Rinse			Replace
3DM Nuggets			Rinse ³	Replace ⁴
3DM Beads			Rinse ³	Replace ⁴

- ¹ Top up aquarium water regularly to ensure surface skimmer does not draw air as it might cause air-lock.
 - ² Check and clear the pipes and holes from obstruction regularly to avoid flow reduction.
 - ³ DO NOT use tap water, soap or detergent to clean BioTrap Sponge, 3DM Beads and 3DM Nuggets. Aquarium water or de-chlorinated water should be used instead.
 - ⁴ DO NOT replace the different biological media (BioTrap Sponge, 3DM Beads and 3DM Nuggets) at the same time as the beneficial bacterial will be removed. Replace half the quantity and the other half after a few weeks.
- ⁵ The impeller and the shaft is an important part that requires regular maintenance to keep up the filter's performance.
- a. Remove the Impeller Cover
 - b. Gently remove the Impeller from the Impeller Well and rinse with clean water.
 - c. Wipe Impeller Well with clean cloth.
 - d. Place back the Impeller, and lastly the Impeller Cover after the Impeller is in place.

TROUBLE SHOOTING

PROBLEM	POSSIBLE CAUSES	SOLUTION
Unable to affix the Pump Head to the Canister Body	Pump Head is fitted in the wrong direction, causing obstruction.	Ensure that the intake hole on Pump Head and intake hole of Filter Media Basket is aligned
	The Filter Media Baskets are not properly positioned	Ensure that the Filter Media Baskets sit properly within the Canister
	There is too much filter medias contained in the Filter Media Baskets	Reduce the filter medias used
Filter is leaking	The clips are not properly secured	Ensure clips are properly locked down
	Foreign objects at the seal ring	Remove foreign objects
	O-ring is damaged	Replace with new O-ring
Impeller does not work	The Hose Adaptor is not properly installed, or its gasket is obstructed by foreign objects or damaged	Check that the Hose Adaptor is properly installed. Check the gaskets are free from obstruction or replace the damaged gaskets
	The inlet or outlet hose is not installed properly or the hoses were cut unevenly	Check that the hoses are installed properly and the hoses were cut evenly
	Power is not switched on	Switch on power
There is a reduction in Flow Rate	The impeller shaft is broken	Replace with new impeller shaft
	The impeller is obstructed	Remove the obstruction
	Air is found trapped in the filter	(See below, 'Air is found trapped in the filter')
Air is found trapped in the filter	The hose is bent	Straighten the hose. Replace hose if unable to rectify
	Filter media crumbs obstructing water flow	Clear the filter media crumbs
	Filter Media Basket is clogged	Clean the Filter Media Basket
Water intake is found to be irregular	The filter is positioned at an incorrect level	The Pump Head should be at least 10cm below the aquarium water level
	Filter media crumbs obstructing water flow	Clear the filter media
	Air intake through inlet Hose	Check whether inlet hose is tightly fitted and air does not enter
Noisy during operation	Air is still trapped in filter	Tilt the filter left and right until trapped air is cleared
	The hose is not properly attached	Attached the hose properly
	The Filter is positioned at an incorrect level	The Pump Head should be at least 10cm below the aquarium water level
Indicator light does not light up	Air is trapped in filter	Tilt the filter left and right until trapped air is cleared
	Pump Head is above aquarium water level	The Pump Head should be at least 10cm below the aquarium water level
	The impeller is obstructed	Remove the obstruction
	The impeller shaft is broken	Replace with new impeller shaft
	Indicator light does not light up	Contact your specialist pet shop

NO.	COMPONENT	HYDRA FILTRON 1000		HYDRA FILTRON 1500		HYDRA FILTRON 1800	
		ARTICLE NO.	QTY.	ARTICLE NO.	QTY.	ARTICLE NO.	QTY.
1	Hose Adaptor With Valve	HF001	1	HF002	1	HF002	1
2	Adaptor O-Ring	HF003	4	HF004	4	HF004	4
3	Priming Lever	HF005	1	HF006	1	HF006	1
4	Pump Head	HF007	1	HF008	1	HF009	1
5	Silicon O-Ring	HF010	1	HF011	1	HF012	1
6	Cata-pure Cartridge(s)	HF025	2	HF025	3	HF025	4
7	Cata-pure Chamber Cover	HF013	1	HF014	1	HF014	1
8	Filter Media Basket Cover	HF015	1	HF016	1	HF017	1
9	Filter Media Basket	HF018	3	HF019	3	HF020	4
10	Filter Cover Flaps	HF021	4	HF022	4	HF023	4
11	Canister Body	HF024	1	HF025	1	HF026	1
12	Impeller	220V/50Hz HF027 220V/60Hz HF028 110V/60Hz HF029	1	220V/50Hz HF030 220V/60Hz HF031 110V/60Hz HF032	1	220V/50Hz HF033 220V/60Hz HF034 110V/60Hz HF035	1
13	Impeller Cover	HF036	1	HF037	1	HF038	1
14	Carbon Pad	HF039	1	HF040	1	HF041	1
15	Fine Filter Wool	HF042	1	HF043	1	HF044	1
16	3DM Beads	HF045	0.7L	HF045	1.05L	HF045	1.4L
17	BioTrap Sponge	HF046	2	HF047	2	HF048	2
18	3DM Nuggets (Medium)	HF049	1.2L	HF049	1.8L	HF049	3.6L
19	Inlet / Outlet Elbow Pipe		1		1		1
20	Stopper		1		1		1
21	Surface Skimmer		1		1		1
22	Surface Skimmer Adjuster		1		1		1
23	Surface Skimmer Elbow Adapter	HF050	1	HF051	1	HF051	1
24	Inlet Pipe		1		1		1
25	Inlet Extension Pipe		1		1		1
26	Inlet Strainer		1		1		1
27	ø23 Clip With Suction Cup		2		2		2
28	ø26 Clip With Suction Cup		2		2		2
19	Inlet / Outlet Elbow Pipe		1		1		1
29	Spray Bar Elbow		1		1		1
30	ø18 Clip With Suction Cup		4		4		4
31	Swivel Outlet	HF052	1	HF053	1	HF053	1
32	Spray Bar		2		2		2
33	Spray Bar Connector		1		1		1
34	End Cap		1		1		1
35	Hose	HF054	2	HF055	2	HF055	2
SPARE PART SETS AVAILABLE (SOLD SEPARATELY)							
Suction Cup Set (No.27, 28 & 30)		HF056		HF057		HF057	